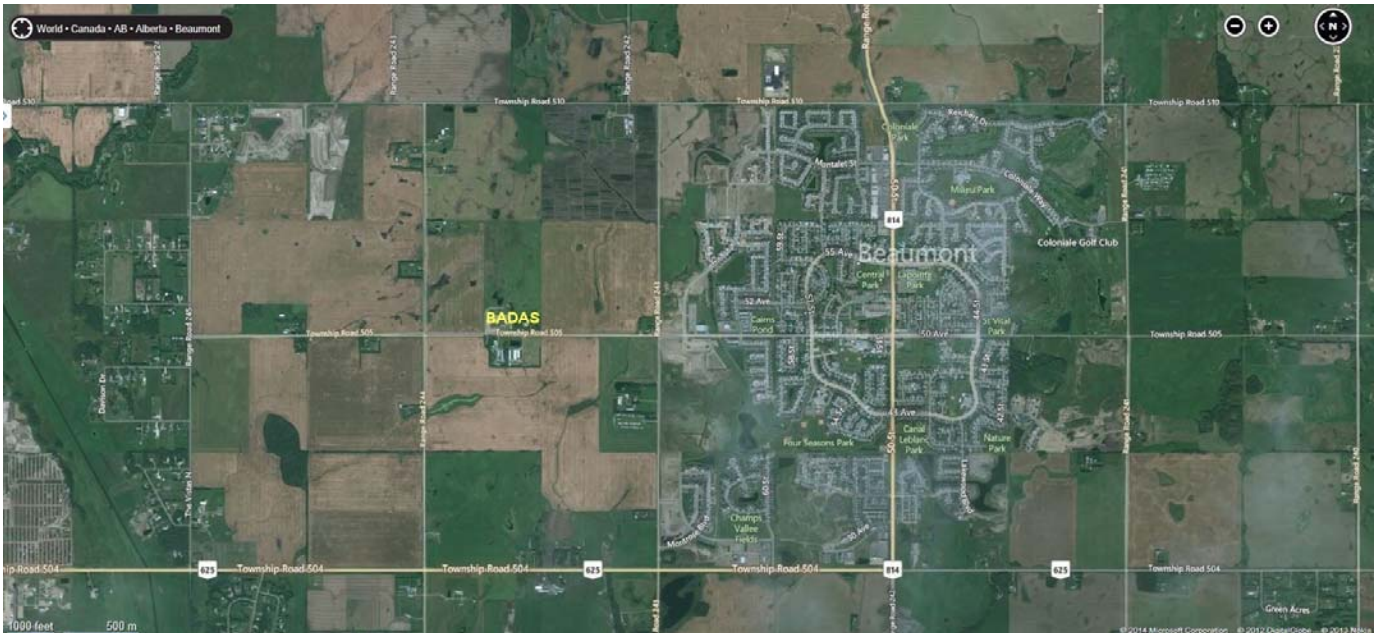


# Beaumont and District Agricultural Society (BADAS)

Fairgrounds Location (Bing Maps):

**Municipal Address:**

**24358 Township Road 505, Leduc County**



**Written/Verbal Directions:** The map above shows all of the main highways and grid roads in the Beaumont area. While there are any number of routes using a combination of main and grid roads, the following routes are most often used.

**From the North** (e.g. Edmonton, Sherwood Park, Strathcona County, areas north and west of Edmonton) - Exit Anthony Henday onto 50<sup>th</sup> Street (Secondary 814); travel south to Beaumont. **Best Option** - Proceed through Beaumont on 50<sup>th</sup> Street to the intersection of 50<sup>th</sup> Street and 50<sup>th</sup> Avenue (landmark St. Vital Catholic Church on southeast corner of intersection); take 50<sup>th</sup> Avenue west to the 4-way stop at Range (Rg) Road (Rd) 243 on 50<sup>th</sup> Ave. Continue west, now on Township (Tp) Rd 505, for 0.75 miles (1.2 kilometers) to the Fairground entrance gate.

**Alternate Route from the north edge of Beaumont** - At the first set of lights, turn right (west) on Tp Rd 510; proceed west 2 miles (3.2 km) to Rg Rd 244; turn left and proceed south 1 mile (1.6 km) to Tp Rd 505; turn left (east) and proceed 0.25 mi. (0.4 km) to the Fairground entrance gate.

**NOTE:** Rg Rd 243 between Tp Rds 505 and 510 is closed through the summer months of 2015.

**From the West** (e.g. Leduc, Devon, Stony Plain, Spruce Grove, Drayton Valley, Red Deer, etc.) - Exit Highway QE2 or Highway 19 (from Devon) onto Highway 19/Secondary 625; proceed east through Nisku to Rg Rd 244. Turn left and proceed north for 1 mile (1.6 km) to Tp Rd 505; turn right and proceed 0.25 mi. (0.4 km) to the Fairground entrance gate.

**From the South or East** (e.g. New Sarepta, Camrose, Tofield, Strathcona County, Wetaskiwin, etc.) - Turn left (west) onto Secondary 625 from either Secondary 814 (south of Beaumont) or Highway 21 (east of Beaumont). Proceed to Rg Rd 243, which borders the southwest quadrant of Beaumont. Turn right onto Rg Rd 243 and proceed 1 mile (1.6 km) north to Tp Rd 505; turn left (west) and proceed 0.75 miles (1.2 kilometers) to the Fairground entrance gate.